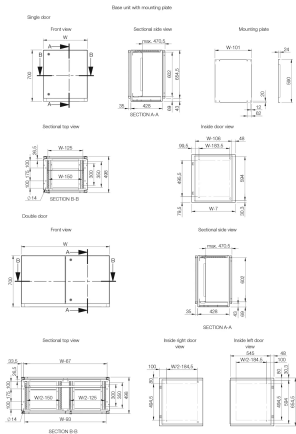


CONSOLE SYSTEM STAINLESS STEEL, MPCS



This stainless steel combinable console system, MPCS, has a IP 55/56 protection degree. It includes three interchangeable sections, top, desk and bottom. The system is very flexible and the various possible combinations can meet many design requirements. The ergonomic design of the top and desk units allows for easy installation and access to HMI-equipment, plus increases the mounting space available. This console can be installed in virtually any environment, grade dependent.

INDUSTRY STANDARDS

- UL 508A Listed; Type 12, 13, 4X; File No. E92044
- cUL Listed per CSA C22.2 No. 14-13; Type 12, 13, 4X; File No. E92044
- IEC 60529
- CE
- EAC
- GOST

FEATURES

Material: AISI 304 pre-grained stainless steel / AISI 316L (on request). Body and door: 2 mm. Rear panel: 1.5 mm. Bottom plates: 1.5 mm. Mounting plate: 2.5 mm galvanized steel.

Body: Folded and seam welded. Console construction includes a base that provides a distance between the floor and the lower part of the door/s, acting as an integrated plinth.

Doors and panels: Single folded surface mounted with hinges, allowing left and right-hand opening to base door. Top section and desk panels held open by self engage/self release mechanical panel stays. Concealed hinges allowing 90° opening on the desk. Double doors on 1200 mm and 1600 mm wide base units.

Mounting plate: Standard in base unit. Fixed by fixing brackets on C rail, top and bottom for depth adjustment. Optional in desk and top section units.

Lock: Double-bit 3 mm locks for top section and desk unit. For base, two double-bit 3 mm locks. Other options available. See wall mounting section.

Cable access: Bottom opening in base unit for cable access. Bottom plates for cable glanding supplied as standard.

Earthing: M8 threaded studs on bodies, doors and rear panels.

Finish: 400 pre-grained stainless steel.

Protection: Single door: IP 66 | TYPE 4X, 12, 13 | IK 10. Double door: IP 55 | TYPE 12, 13 | IK 10.

Delivery: The base unit is provided with a mounting plate as standard. Desk and top section units have mounting plates provided as accessories. All top and base apertures can be closed by choosing the appropriate accessory plate. Suitable nuts and washers for the various earthing studs are provided.

SPECIFICATIONS

Thickness: 2 mm
Finish: Brushed
Color: Unpainted

Table 1/1

Catalog Number	Height	Width	Depth	Material	Mounting Plate Included	Panel Size
MPCS061	500 mm	600 mm	494 mm	Stainless Steel 304	No	
MPCS061-316	500 mm	600 mm	494 mm	Stainless Steel 316L	No	
MPCS062-316	250 mm	600 mm	985 mm	Stainless Steel 316L	No	
MPCS063	700 mm	600 mm	500 mm	Stainless Steel 304	Yes	499 x 590 mm
MPCS063-316	700 mm	600 mm	500 mm	Stainless Steel 316L	Yes	499 x 590 mm
MPCS081	500 mm	800 mm	494 mm	Stainless Steel 304	No	
MPCS081-316	500 mm	800 mm	494 mm	Stainless Steel 316L	No	
MPCS082	250 mm	800 mm	985 mm	Stainless Steel 304	No	
MPCS082-316	250 mm	800 mm	985 mm	Stainless Steel 316L	No	
MPCS083	700 mm	800 mm	500 mm	Stainless Steel 304	Yes	699 x 590 mm
MPCS083-316	700 mm	800 mm	500 mm	Stainless Steel 316L	Yes	699 x 590 mm
MPCS101	500 mm	1000 mm	494 mm	Stainless Steel 304	No	
MPCS101-316	500 mm	1000 mm	494 mm	Stainless Steel 316L	No	
MPCS102	250 mm	1000 mm	985 mm	Stainless Steel 304	No	
MPCS102-316	250 mm	1000 mm	985 mm	Stainless Steel 316L	No	
MPCS103	700 mm	1000 mm	500 mm	Stainless Steel 304	Yes	899 x 590 mm
MPCS103-316	700 mm	1000 mm	500 mm	Stainless Steel 316L	Yes	899 x 590 mm
MPCS121	500 mm	1200 mm	494 mm	Stainless Steel 304	No	
MPCS121-316	500 mm	1200 mm	494 mm	Stainless Steel 316L	No	
MPCS122	250 mm	1200 mm	985 mm	Stainless Steel 304	No	
MPCS122-316	250 mm	1200 mm	985 mm	Stainless Steel 316L	No	
MPCS123	700 mm	1200 mm	500 mm	Stainless Steel 304	Yes	1099 x 590 mm

CatalogNumber	Height	Width	Depth	Material	Mounting Plate Included	Panel Size
MPCS123-316	700 mm	1200 mm	500 mm	Stainless Steel 316L	Yes	1099 x 590 mm
MPCS161	500 mm	1600 mm	494 mm	Stainless Steel 304	No	
MPCS161-316	500 mm	1600 mm	494 mm	Stainless Steel 316L	No	
MPCS162	250 mm	1600 mm	985 mm	Stainless Steel 304	No	
MPCS162-316	250 mm	1600 mm	985 mm	Stainless Steel 316L	No	
MPCS163	700 mm	1600 mm	500 mm	Stainless Steel 304	Yes	1499 x 590 mm
MPCS163-316	700 mm	1600 mm	500 mm	Stainless Steel 316L	Yes	1499 x 590 mm
MPCS062	250 mm	600 mm	985 mm	Stainless Steel 304	No	

ADDITIONAL PRODUCT DETAILS

Note: Only 1200 mm and 1600 mm wide consoles have double door. * On request.

WARNING

nVent products shall be installed and used only as indicated in nVent's product instruction sheets and training materials. Instruction sheets are available at www.nvent.com and from your nVent customer service representative. Improper installation, misuse, misapplication or other failure to completely follow nVent's instructions and warnings may cause product malfunction, property damage, serious bodily injury and death and/or void your warranty.



Our powerful portfolio of brands:
nVent.com **CADDY ERICO HOFFMAN RAYCHEM SCHROFF**
TRACER